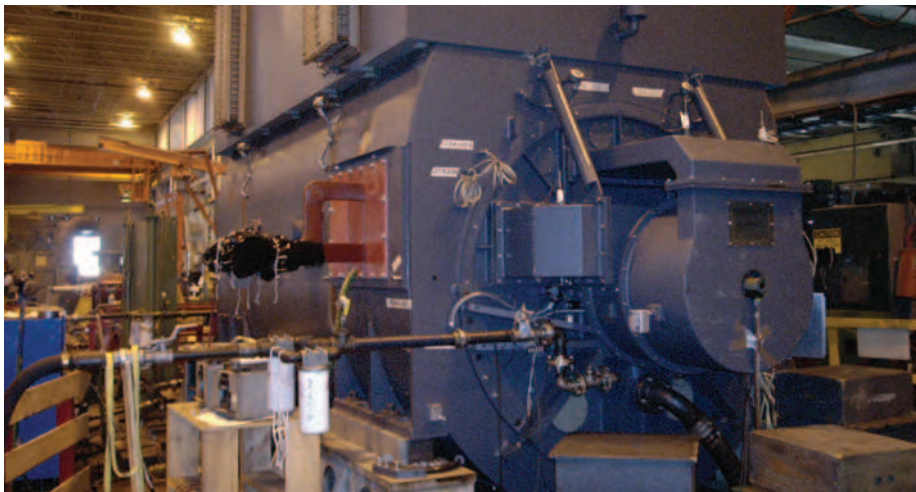




# 2-Pole Turbine Generators

## Factory Testing

**A comprehensive factory testing schedule is carried out on all generators to ensure further enhanced reliability. Full load current and voltage testing is included.**



All generators are fully assembled with their own bearings and vibration probes. Testing is performed at rated speed and voltage as required using a shop driver and lube oil system. Vibration probes are monitored continuously using a data acquisition system. Temperatures and pressures are monitored as well, including lube oil, bearing metal, and cooling air/water. Tests are specified in IEEE C50.13 and Electric Machinery standards and performed by methods in IEEE 115.

Test	All Machines	Optional
Resistance of armature and field windings	X	
Dielectric test of armature and field windings	X	
Voltage balance	X	
Phase sequence	X	
Mechanical balance (vibration)	X	
Open circuit saturation curve	X	
Overspeed	X	
Rotor impedance	X	
Measurement of insulation resistance of armature and field windings	X	
Shorted field turns check	X	
Accessories/detectors test	X	
Polarization index	X	
Bearing inspection	X	
Exciter operation	X	
Measurement of bearing insulation resistance	X	
Short circuit saturation curve		X
Harmonic analysis and measurement of TIF		X
Heat runs		X
Short circuit tests at reduced voltage to determine reactances and time constants		X
Measurement of segregated losses		X
Noise test		X





Electric Machinery  
800 Central Avenue NE  
Minneapolis, Minnesota 55413  
United States  
Tel: +1 612 378 8000  
Fax: +1 612 378 8051  
[www.electricmachinery.com](http://www.electricmachinery.com)